

**PROJECT COMPLETION REPORT FOR THE
CONSTRUCTION OF GIRLS' TOILET BLOCK
AT ST. MICHAEL'S HIGH SCHOOL,
MADHAKOTTAI IN THANJAVUR DISTRICT AT
TAMIL NADU, INDIA**



Cauveri

Salesian Province of Tiruchy

PROJECT COMPLETION REPORT FOR THE CONSTRUCTION OF GIRLS' TOILET BLOCK AT ST. MICHAEL'S HIGH SCHOOL, MADHAKOTTAI IN THANJAVUR DISTRICT AT TAMIL NADU

BACKGROUND

St. Michael's High School has 400 students with 7 aided staff and 14 management paid staff. There are 231 girls and 169 boys belonging to all religions studying in the school. School has got various groups and movements like Scouts, Guides, JRC, Eco clubs etc. St. Michael's Primary School which serves as the feeder School was started in 1909 and a century old School. As there was no facility to move beyond the primary School many boys and girls dropped out hesitating to go to far away High Schools. Hence the Salesians upgraded the Primary School to a High School in 1992 which encouraged many boys and girls to reach the High School education. The School has a history of 27 years but very much lacks in infrastructure facilities. There is a long felt need to provide better infrastructure to the High School.

IMPLEMENTATION OF THE PROJECT

The proposed project was approved by the donor and proceeded with the objectives of the original proposed project. The project was launched at the project location soon after the receipt of funds. A quality construction contractor in the locality was appointed to construct the toilet block for the girl children at St. Michael's High School, Madhakottai. This project was very helpful to the children attending our school especially girl children, children attending catechism classes and women association members. The fund was fully utilized only for the proposed activities.

PROJECT COMPLETION REPORT FOR THE CONSTRUCTION OF GIRLS' TOILET BLOCK AT ST. MICHAEL'S HIGH SCHOOL, MADHAKOTTAI IN THANJAVUR DISTRICT AT TAMIL NADU

BENEFICIARIES OF THE PROJECT

Almost 300 girl children of the school are the direct beneficiaries of this project. These beneficiaries will comprise of the following categories:

- They are from different categories such as economically weaker sections, orphan, disadvantaged and vulnerable children, SC, ST Students and Socially backward children.
- The indirect beneficiaries of the project are teaching staff, non teaching staff, and parents of the children, Salesian community members, volunteers and other well wishers of the St. Michael's High School at Madhakottai.
- The children from catechism and members of women groups will also be utilizing the facility.

ACTIVITIES UNDERTAKEN WITH THE FUNDING SUPPORT

We have constructed 10 toilets for girls in a separate toilet block. The following works were carried out during the project period;

1. Earthwork and laying foundation
2. Brick work for the toilet complex
3. Reinforced Cement Concrete (RCC) work
4. Steel fabrication for doors and windows
5. Plastering work for the toilet block
6. Ceramic flooring work
7. White washing and painting work
8. Fixing Sintex water tank

PROJECT COMPLETION REPORT FOR THE CONSTRUCTION OF GIRLS' TOILET BLOCK AT ST. MICHAEL'S HIGH SCHOOL, MADHAKOTTAI IN THANJAVUR DISTRICT AT TAMIL NADU

IMPACT OF THE PROJECT

The girl students of St. Michael's High School received better sanitation with adequate water facilities and promoted their sanitation facilities and a clean environment was created through this project with the financial assistance from APIS Onlus Italia.

OUTCOME

Education for girls in India depends on a multitude of factors. Factors like safety, transportation, social stigmas and perceptions all play a role in determining whether or not a girl gets educated. Aside from having schools that are accessible to girls, specific challenges that girls face while receiving an education need to be addressed. One such factor is the existence of water and sanitation facilities in educational institutions.

This was possible through this project. The toilet facilities have greatly improved the school girl children's hygiene, as pupils no longer defecate in open places. We have also seen improved school attendance for girls, including when they are menstruating, a critical time for girls to have access to clean and safe toilets for their comfort.

GRATITUDE FOR YOUR GENEROUS SUPPORT

We are much grateful to APIS Onlus Italia who came forward to support this project generously through the Trichy Don Bosco Society of Salesian province of INT for mobilizing the resources needed to carry out this project which was a real and urgent need of the school children. It has given dignity and status to the girl children studying at St. Michael's High School. We, the Rector, Salesians, teachers, students and the entire community at Madhakottai are thankful to you for your timely help and continuous support.



St.MICHAEL'S HIGH SCHOOL
Madhakottai
GIRLS' TOILET BLOCK
Sponsored by
APIS, Italy
Inaugurated On
21.08.2021



The Trichy Don Bosco Society

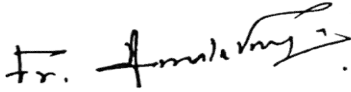
Don Bosco Provincial House, 65, Illuppur Road, Kallukuzhy, Tiruchirapalli 620 020, India

**Project : Construction of Toilet Block in St. Michael's Higher Secondary School at
Madhakottai, Thanjavur**

Receipts and Payments account for the period 01 November 2020 to 31 December 2021

RECEIPTS	AMOUNT INR	PAYMENTS	AMOUNT INR
Project fund received from ASSOCIATIONE PRO INDIA DEL SUD (APIS), Rome On 30.11.2020 On 18.06.2021 Salesian contribution	 7,37,721.00 1,52,266.00 468.00	Bills Paid to the Contractor Elanthamizh Arasan on 18.01.2021 for Construction Work on 01.12.2021 for Fitting, Painting & Etc..	 7,40,000.00 1,50,455.00
TOTAL	8,90,455.00	TOTAL	8,90,455.00 -

For The Trichy Don Bosco Society



Provincial Economist

Tiruchirapalli

21.01.2022

Provincial Economist
Don Bosco Provincial House
65, Illuppur Road, Kallukuzhy
Tiruchirapalli - 620 020, India.

V. No. 874 / 18.01.21

A. ELANTHAMIZH ARASAN
151, Ashok nagar, Behind Bharath College, Thanjavur-613 005

20

FC AIC
TO BS

RECEIPT

Date: 04.10.3/2021

Received with thanks from Mr The Trichy Don Bosco Society

the sum of Rupees Seven lakhs forty thousand

Only by cash /cheque/Draft no. 054363

on 18/01/2021 towards Construction of toilet block @ St. Michael school

Rs. 7,40,000/-

A. Elanthamizh Arasan
LANTHAMIZH ARASAN

705 5550
721450

Rs. 7,40,000/-

**Proposed Construction of Toilet Block, in St.Michael's Higher Secondary School at Madhakottai -
Thanjavur.**

Sl.No	DESCRIPTION OF WORK	UNIT	QTY	RATE	AMOUNT
1	Excavation in all types of soil including dense/loose soil, disintegrated and weathered soft rock including demolition of any existing concrete portion with suitable mechanical excavator and manually wherever required upto required level as shown in the drawing .Carting away and disposing the same of an approved location. The rate shall include for installing and maintaining proper approved dewatering system to ensure clear working area including necessary shoring & strutting to avoid soil collapse. The contractor shall be paid only for the excavation on the basis of plan area x depth mentioned in the relevant drawing.The rate shall also include satisfying all safety norms, general house keeping .	Cum	30.33	350.00	10616.15
2	Filling with good M-sand in layer of 150 mm well watered rammed and consolidated etc.complete. The rate to include cost of centering if any.	Cum	9.20	2000.00	18401.65
3	Filling in foundation and basement with good filling EARTH in layer of 150mm well watered rammed and consolidated etc complete quarried from a good quarry, free from clays, lumps, vegetation roots, pebbles and other foreign impurities. The sample of filling EARTH is to be approved by Development Manager/Client Engineer incharge.	Cum	12.70	800.00	10157.26
4	Plain cement Concrete(PCC) 1 : 3 : 6 one part of cement three part of sand and six parts of good approved 40mm HBG jelly, well mixed in a mechanical mixed and placed in position and consolidated by rammer / vibrator. The sides and bottom of excavation should have been well damped with water before laying of concrete. The rate to include cost of hire charges for mixer machine and vibrator etc. The top of concrete to be made to even level without adding any mortar in foundation for bases of walls,plinths,rafts,plinth beams, floor slabs pits to make up levels etc.	Cum	9.20	3900.00	35883.21
5	Reinforcement cement Concrete (RCC) 1 : 1.5 : 3 one part of cement one and half part of sand and three parts of good approved 40mm HBG jelly, well mixed in a mechanical mixed and placed in position and consolidated by rammer / vibrator. The sides and bottom of excavation should have been well damped with water before laying of concrete. The rate to include cost of hire charges for mixer machine and vibrator etc. The top of concrete to be made to even level without adding any mortar in foundation for bases of walls,plinths,rafts,plinth beams, floor slabs pits to make up levels etc.	Cum	6.51	8000.00	52056.82
7	Supplying ,cutting, bending to shape fabricating, fixing tying in position Reinforcement steel of Fe 415 grade in all RCC works including supplying , and tying with 18G black annealed binding wire in position , including cost of binding wire, in all floors .	Kg	764.24	60.00	45854.24

8	Brickwork in 230mm thick with Cement Mortar 1:5, using Best quality locally available bricks having a crushing strength of minimum 50kg/Sqcm including all scaffolding, curing etc. complete. The thickness of joints should not exceed 12mm and each brick layer to be in one line and level and the brick wall so constructed shall be true to plumb.	Cum	32.37	5500.00	178017.89
9	Plastering the sides and soffits of slabs and beams with cement mortar 1 : 3, 12mm thick using good screened river sand including providing patch plaster etc. The rate to include apart from above the cost of all scaffolding, curing. Wetting the walls thoroughly before proceeding with the plastering etc. complete.	Sqm	235.14	300.00	70541.65
10	Provision and Fixing of WPC Doors including frame, fittings etc., complete.	Sqm	19.52	3900.00	76126.56
11	Provision and Fixing of MS Door including frame, fittings etc., complete.	Sqm	2.28	1800.00	4099.12
12	Providing and applying two or more coats of Exterior emulsion to obtain a smooth / even surface. The surface should be made free of undulation after application to get even shade including necessary scaffolding in all floor complete as directed by Engineer - in - charge.	Sqm	235.14	100.00	23513.88
13	Providing and applying Enamel paint finish with two coat over one coat of primer to all wooden joineries including necessary scaffolding in all floor etc., complete.	Sqm	4.55	250.00	1138.65
14	Providing, fixing, testing and commissioning White Color floor mounted European Water Closeset S trap with White seat covers, white Pvc slimline dual flush cistern with internal, External Plumbing works etc., Complete.	Nos	1.00	12500.00	12500.00
15	Providing, fixing, testing and commissioning white color Orissa pan with P trap set in Cement concrete and filling the area with sand and brick bats in still floor toilets including internal, External Plumbing works etc., Complete.	Nos	11.00	9000.00	99000.00
16	Provision and Fixing of GI Sheet Roofing including frame arrangements, fittings necessary scaffolding arrangements etc., Complete.	Sqm	65.93	1550.00	102196.53
				Toatal Amount	740103.62
	Sundries				-103.62
				GRAND TOTAL	740000.00

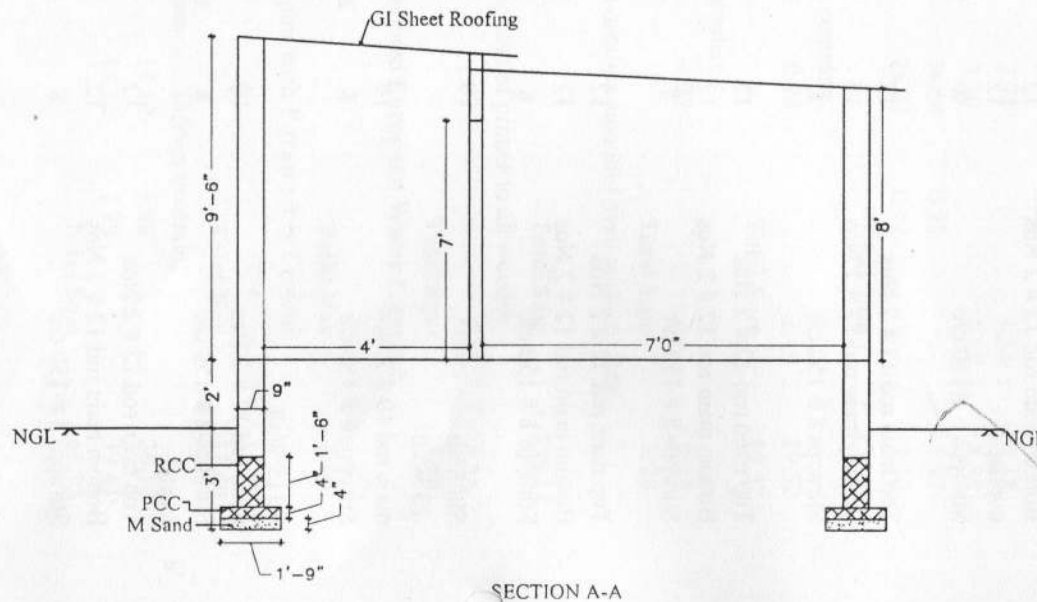
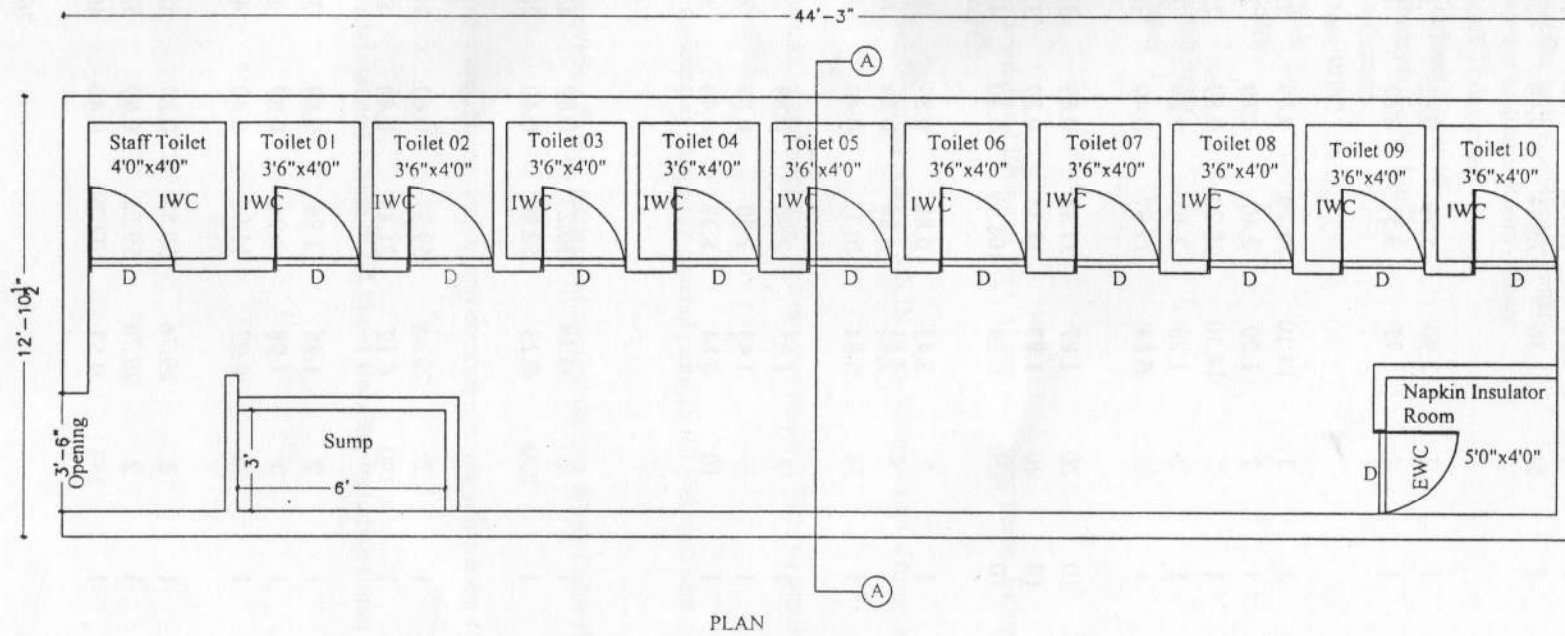
Proposed Construction of Toilet Block in St.Michael's Higher Secondary School at Madhakottai - Thanjavur.

S No	Description of Work	Nos	L	B	D	QTY
1	Excavation in all types of soil including dense/loose soil, disintegrated and weathered soft rock					
	Earth Beam	2	14.10	0.53	1.52	22.94
		2	3.47	0.53	1.52	5.60
	Sump	1	2.59	1.30	0.53	1.79
						Total in Cum
						30.33
2	Filling with good M-sand in layer of 150 mm well watered rammed and consolidated etc.complete. The					
	in Footing	2	14.10	0.53	0.10	1.51
		2	3.47	0.53	0.10	0.37
	in Basement	1	13.03	3.47	0.15	6.89
	Sump	1	2.59	1.30	0.13	0.43
						Total in Cum
						9.20
3	Filling in foundation and basement with good filling EARTH in layer of 150mm well watered rammed					
		1	13.03	3.47	0.30	13.78
	Deduction for Sump	-1	2.59	1.37	0.30	-1.08
						Total in Cum
						12.70
4	Plain cement Concrete(PCC) 1 : 3 : 6 one part of cement three part of sand and six parts of good approv					
	in Footing	2	14.10	0.53	0.10	1.51
		2	3.47	0.53	0.10	0.37
	Sump	1	2.59	1.30	0.13	0.43
	in Basement	1	13.03	3.47	0.15	6.89
						Total in Cum
						9.20
5	Reinforcement cement Concrete (RCC) 1 : 1.5 : 3 one part of cement one and half part of sand and three					
	Earth Beam	2	13.49	0.23	0.46	2.82
		2	3.47	0.23	0.46	0.73
	Sill Slab	2	13.49	0.23	0.10	0.62
		2	3.47	0.23	0.10	0.16
		10	1.22	0.12	0.10	0.14
		1	13.03	0.12	0.10	0.15
	Buffle Wall	1	1.22	0.12	0.10	0.01
	Napkin Insulator Room	1	2.97	0.12	0.10	0.03
	Lintel	1	1.52	0.23	0.23	0.08
	Napkin Insulator Room	1	1.22	0.12	0.15	0.02
	Toilet	10	1.45	0.12	0.15	0.25
		1	13.49	0.12	0.15	0.23
	For Mat	1	2.59	1.30	0.30	1.02
	Tie Beam	1	13.49	0.12	0.15	0.23
						Total in Cum
						6.51
7	Supplying ,cutting, bending to shape fabricating, fixing tying in position Reinforcement steel of Fe 415					
						Total in Kg
						764.24
8	Brickwork in 230mm thick with Cement Mortar 1:5,using Best quality locally available bricks having a					
		1	13.49	0.23	3.76	11.60
		1	13.49	0.23	3.30	10.19
		1	3.47	0.23	3.53	2.80
		1	3.47	0.23	3.53	2.80
	Buffle Wall	1	1.22	0.23	2.13	0.60
	Napkin Insulator Room	1	1.52	0.12	2.13	0.37
		1	1.34	0.12	2.13	0.33
		1	13.03	0.12	2.13	3.20
		9	1.22	0.12	1.52	1.92
		1	1.22	0.12	2.13	0.30
	Door WPC	-12	0.76	0.12	2.13	-2.24

Open	-1	1.07	0.23	2.13	-0.52
Sump	1	1.83	0.23	1.52	0.64
	1	1.14	0.23	1.52	0.40
			Total in Cum		32.37
9	Plastering the sides and soffits of slabs and beams with cement mortar 1 : 3, 12mm thick using good				
Outer	1	13.49		3.51	47.30
	1	13.49		3.05	41.13
	2	3.93		3.53	27.71
Inner	1	13.03		2.90	37.75
	1	13.03		2.44	31.79
	2	3.47		2.67	18.50
Buffle Wall	1	2.55		2.29	5.84
Napkin Insulator Room - inner	1	2.74		2.29	6.27
Napkin Insulator Room - Outer	1	2.97		2.29	6.80
Staff Toilet inner	1	2.44		2.29	5.58
Students Toilet 10	1	2.29		2.29	5.23
Students Toilet 1 to 9	9	1.22		1.52	16.73
Deduction					
Door WPC	-24	0.76		2.13	-39.04
Open	-2	1.07		2.13	-4.55
Soffit	12	5.03	0.12		6.94
	1	5.34	0.23		1.23
Sump inner	1	2.74		1.52	4.18
Outer	1	3.20		1.52	4.88
	1	34.64	0.23		7.97
	1	25.23	0.12		2.90
			Total Sqm		235.14
10	Provision and Fixing of WPC Doors including frame, fittings etc., complete.				
WPC	12	0.76		2.13	19.52
				Total Sqm	19.52
11	Provision and Fixing of MS Door including frame, fittings etc., complete.				
	1	1.07		2.13	2.28
				Total Sqm	2.28
12	Providing and applying two or more coats of Exterior emulsion to obtain a smooth / even surface. The				
				Total Sqm	235.14
13	Providing and applying Enamel paint finish with two coat over one coat of primer to all wooden				
	2	1.07		2.13	4.55
				Total Sqm	4.55
14	Providing, fixing, testing and commissioning White Color floor mounted European Water Closet S				
	1				1.00
				Total Nos	1.00
15	Providing, fixing, testing and commissioning white color Orissa pan with P trap set in Cement				
	11				11.00
				Total Nos	11.00
16	Provision and Fixing of GI Sheet Roofing including frame arrangements, fittings necessary				
	1	14.10	1.88		26.52
	1	14.10	2.79		39.41
				Total Sqm	65.93

S.NO	DESCRIPTION	DIA OF BAR (mm)	NO OF BAR	NO OF MEMBER	TOTAL NOS	CUTTING LENGTH (m)	TOTAL LENGTH (m)	UNIT LENGTH WEIGHT (kgs)	TOTAL WEIGHT (kgs)
1	For Earth Beam								
	Top main rod 12 # 2 Nos	12	2	2	4	14.41	57.62	0.89	51.28
	Overlap	12	2	2	4	0.60	2.40	0.89	2.14
	Bottom main rod 12 # 2 Nos	12	2	2	4	14.41	57.62	0.89	51.28
	Overlap	12	2	2	4	0.60	2.40	0.89	2.14
	Stirrups 8 # 150 c/c	8	90	2	180	1.36	244.80	0.40	96.70
	Top main rod 12 # 2 Nos	12	2	2	4	4.84	19.36	0.89	17.23
	Bottom main rod 12 # 2 Nos	12	2	2	4	4.84	19.36	0.89	17.23
	Stirrups 8 # 150 c/c	8	27	2	54	1.36	73.44	0.40	29.01
2	For Sump Mat								
	top & Bottom rod 10 # 150 c/c	10	2	1	2	2.90	5.79	0.62	3.59
	top & Bottom rod 10 # 150 c/c	10	2	1	2	1.75	3.51	0.62	2.17
3	Tie Beam								
	Top main rod 12 # 2 Nos	12	2	1	2	14.10	28.20	0.89	25.10
	overlap	12	2	1	2	1.20	2.40	0.89	2.14
	Bottom main rod 12 # 2 Nos	12	2	1	2	14.10	28.20	0.89	25.10
	overlap	12	2	1	2	1.20	2.40	0.89	2.14
	Stirrups 8 # 150 c/c	8	93	1	93	0.84	77.97	0.40	30.80
	Top main rod 12 # 2 Nos	12	2	10	20	1.87	37.35	0.89	33.24
	Bottom main rod 12 # 2 Nos	12	2	10	20	1.87	37.35	0.89	33.24
	Stirrups 8 # 150 c/c	8	13	10	130	0.84	108.99	0.40	43.05
	Top main rod 12 # 2 Nos	12	2	1	2	3.43	6.86	0.89	6.11
	Bottom main rod 12 # 2 Nos	12	2	1	2	3.43	6.86	0.89	6.11
	Stirrups 8 # 150 c/c	8	24	1	24	0.84	20.12	0.40	7.95
	Top main rod 12 # 2 Nos	12	2	1	2	1.45	2.90	0.89	2.58
	Bottom main rod 12 # 2 Nos	12	2	1	2	1.45	2.90	0.89	2.58
	Stirrups 8 # 150 c/c	8	10	1	10	0.84	8.38	0.40	3.31
	Sill Slab								
	.23 Wall								
	main rod 10 # 2 Nos	10	2	1	2	35.14	70.27	0.62	43.57
	Stirrups 8 # 150 c/c	8	230	1	230	0.23	52.90	0.40	20.90
	0.115 Wall								
	main rod 10 # 2 Nos	10	2	1	2	29.68	59.37	0.62	36.81
	Stirrups 8 # 150 c/c	8	190	1	190	0.12	21.85	0.40	8.63
4	Lintel								
	Top main rod 12 # 2 Nos	12	2	1	2	1.98	3.96	0.89	3.52
	Bottom main rod 12 # 2 Nos	12	2	1	2	1.98	3.96	0.89	3.52
	Stirrups 8 # 150 c/c	8	13	1	13	0.92	11.96	0.40	4.72
	Top main rod 12 # 2 Nos	12	2	1	2	29.76	59.53	0.89	52.98
	Bottom main rod 12 # 2 Nos	12	2	1	2	29.76	59.53	0.89	52.98
	Stirrups 8 # 150 c/c	8	193	1	193	0.53	102.29	0.40	40.40

PROPOSED CONSTRUCTION OF TOILET BLOCK in ST MICHAEL HIGHER SECONDARY SCHOOL @ MADHAKOTTAL.



Shedule of Joinery	
D1 (WPC Door) - 2'6" x 7'0" - 12 Nos	
IWC - 11 Nos	
EWC - 01 Nos	2

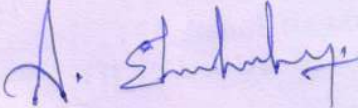
Project Title :
Construction of Toilet Block

Client :
St Michael's Higher Sec School - Girls Toilet

Contractor :
SV ASSOCIATES
S.VIJAY AMALRAJ. B.tech,M.tech.(struct)
Plot No:23, Nataraja Nagar,
Pudukkottai main Road,
Thanjavur - 613005.
E-Mail : svamalraj@gmail.com
Mobile : 9940946450.

**Bill for Construction of Toilet Block in St.Michael's Higher Secondary School at Madhakottai -
Thanjavur.**

Sl.No	DESCRIPTION OF WORK	UNIT	QTY	RATE	AMOUNT
1	Provision and Fixing of MS Door including frame, fittings etc., complete.	Sqm	2.28	1800.00	4099.12
2	Providing and applying two or more coats of Exterior emulsion to obtain a smooth / even surface. The surface should be made free of undulation after application to get even shade including necessary scaffolding in all floor complete as directed by Engineer - in - charge.	Sqm	235.14	100.00	23514.00
3	Providing and applying Enamel paint finish with two coat over one coat of primer to all wooden joineries including necessary scaffolding in all floor etc.,complete.	Sqm	4.55	295.00	1343.60
4	Providing,fixing , testing and commissioning White Color floor mounted European Water Closset S trap with White seat covers , white Pvc slimline dual flush cistern with internal , External Plumbing works etc., Complete.	Nos	1.00	12500.00	12500.00
5	Providing, fixing, testing and commisssioning white color Orissa pan with P trap set in Cement concrete and filling the area with sand and brick bats in stilt floor toilets including internal, External Plumbing works etc., Complete.	Nos	1.00	9000.00	9000.00
6	Provision of Septik Tank and Dispersion trench.		LS		100000.00
			Toatal Amount		150456.72
	Sundries				-1.72
			GRAND TOTAL		150455.00



A.ELANTHAMIZHARASAN
Civil Contractor,
151, Ashok Nagar,
THANJAVUR-613 005.

Proposed Construction of Toilet Block in St.Michael's Higher Secondary School at Madhakottai - Thanjavur.

S No	Description of Work	Nos	L	B	D	QTY
1	Provision and Fixing of MS Door including frame, fittings etc., complete.	1	1.07		2.13	2.28
					Total Sqm	2.28
2	Providing and applying two or more coats of Exterior emulsion to obtain a smooth / even surface. The					
					Total Sqm	235.14
3	Providing and applying Enamel paint finish with two coat over one coat of primer to all wooden	2	1.07		2.13	4.55
					Total Sqm	4.55
4	Providing, fixing , testing and commissioning White Color floor mounted European Water Closeset S	1				1.00
					Total Nos	1.00
5	Providing, fixing, testing and commisssioning white color Orissa pan with P trap set in Cement	1				1.00
					Total Nos	1.00

A. Elanthamizharasan
A.ELANTHAMIZHARASAN
 Civil Contractor,
 151, Ashok Nagar,
 THANJAVUR-613 005.